



Easy Chess Puzzle # 0078

By

G Bud Games
<https://gbud.in>

November 21, 2021

Contents

Easy Chess puzzle # 0078 - Mate in 2 moves	4
Easy chess puzzle 0078	4
Solution to easy chess puzzle 0078	5
Solution 1	5
Solution 2	7
Right moves for the solution to the easy chess puzzle 0078	9
Explanation for the moves	9
Categories of easy chess puzzle 0078	10
How to view the solution to easy chess puzzle 0078	10
How to get help for moves in the easy chess puzzle 0078	11
Play chess for free	13

List of Figures

1	Solve this easy chess puzzle 0078. Mate in 2 moves @ https://gbud.in/g639kk1	4	
2	Solve this chess puzzle online with solution @ https://gbud.in/g639kk1		4
3	Initial board position of easy chess puzzle 0078	5	
4	Ndf7+ - You can have a checkmate from f7 which is guarded by the opponent's knight. One of the knights is sacrificing itself to remove the opponent's knight. This knight forks opponent's king and knight	6	
5	Nxf7 - Opponent's knight captures yours. If you give a chance, opponent will have a checkmate by moving their queen	6	
6	Nxf7# - Your next knight moves in and checkmate. There are no pieces to capture your knight and the king is blocked by friendly pieces. This is called smothered mate. This is how you can mate in 2 moves	7	
7	Initial board position of easy chess puzzle 0078	7	
8	Nef7+ - You can have a checkmate from f7 which is guarded by the opponent's knight. One of the knights is sacrificing itself to remove the opponent's knight. This knight forks opponent's king and knight	8	
9	Nxf7 - Opponent's knight captures yours. If you give a chance, opponent will have a checkmate by moving their queen	8	

10	Nxf7# - Your next knight moves in and checkmate. There are no pieces to capture your knight and the king is blocked by friendly pieces. This is called smothered mate. This is how you can mate in 2 moves	9
11	Click the solution button to view solutions @ https://gbud.in/g639kk1	11
12	Click the help button to get help on next move @ https://gbud.in/g639kk1	12
13	Solve more easy puzzles @ https://gbud.in/chsezpz	12
14	Solve other puzzles @ https://gbud.in/chsgppz	12
15	Play chess online for free. Solve puzzles and play with friends	13
16	Solve this puzzle online by scanning this QR code or go to the link below	14

Easy Chess puzzle # 0078 - Mate in 2 moves

Solve this easy chess puzzle and improve your chess games through improvement of your chess strategies and chess tactics.

Puzzle No : 0078

Difficulty level : Easy

Description : Mate in 2 moves

Next Move : White

Player level : Beginner

Short URL for puzzle : <https://gbud.in/g639kk1>

Easy chess puzzle 0078

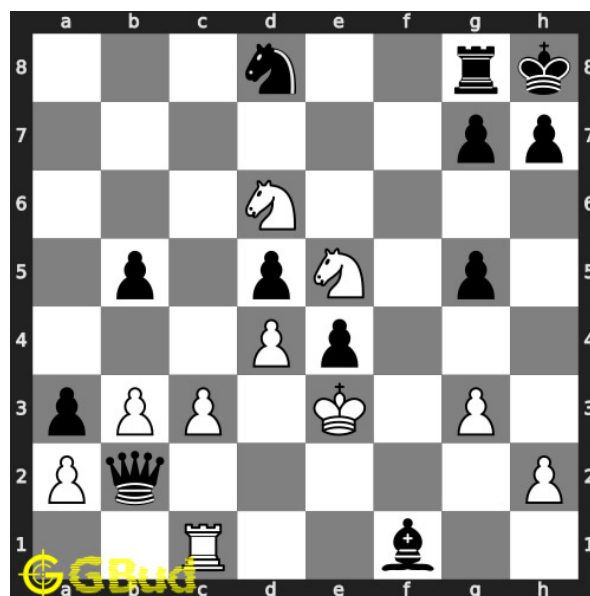


Figure 1: Solve this easy chess puzzle 0078. Mate in 2 moves @ <https://gbud.in/g639kk1>



Figure 2: Solve this chess puzzle online with solution @ <https://gbud.in/g639kk1>

Solution to easy chess puzzle 0078

At this puzzle, next **move** is by **White**. The objective of the puzzle is to mate in 2 moves.

See the interactive solution at the [puzzle page](#)

Solution 1

Initial board position This is the initial board position of easy chess puzzle 0078.

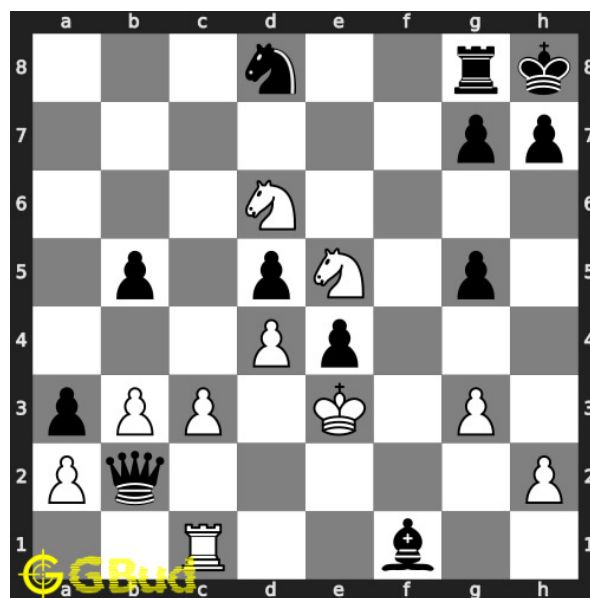


Figure 3: Initial board position of easy chess puzzle 0078

Move 1 Move by white

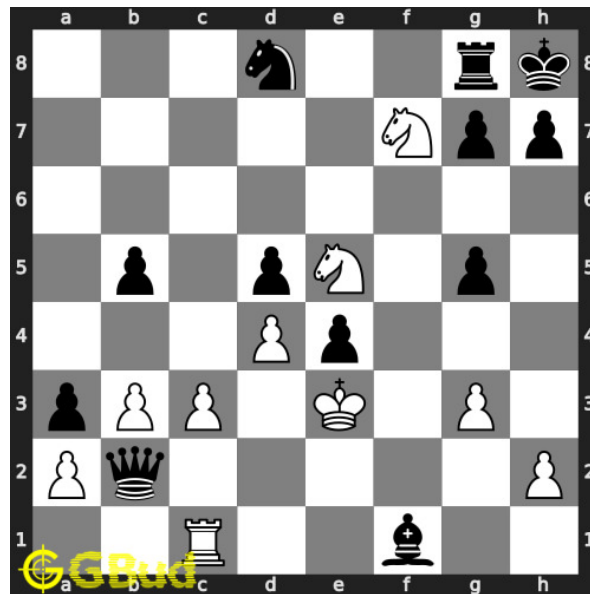


Figure 4: Ndf7+ - You can have a checkmate from f7 which is guarded by the opponent's knight. One of the knights is sacrificing itself to remove the opponent's knight. This knight forks opponent's king and knight

Move 2 Move by black

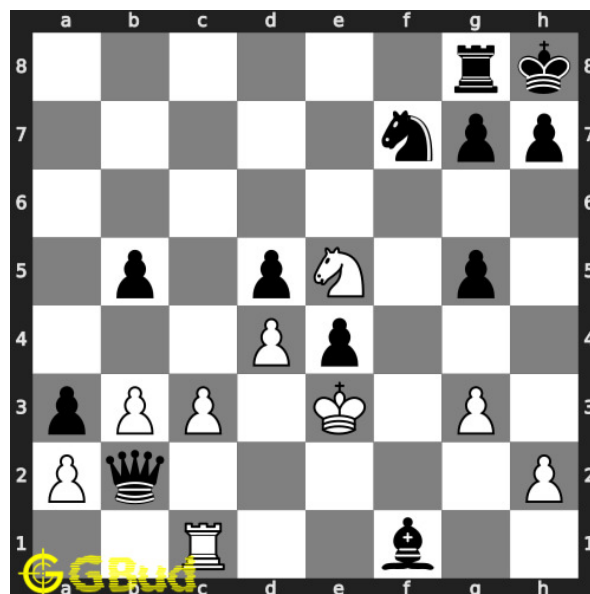


Figure 5: Nxf7 - Opponent's knight captures yours. If you give a chance, opponent will have a checkmate by moving their queen

Move 3 Move by white

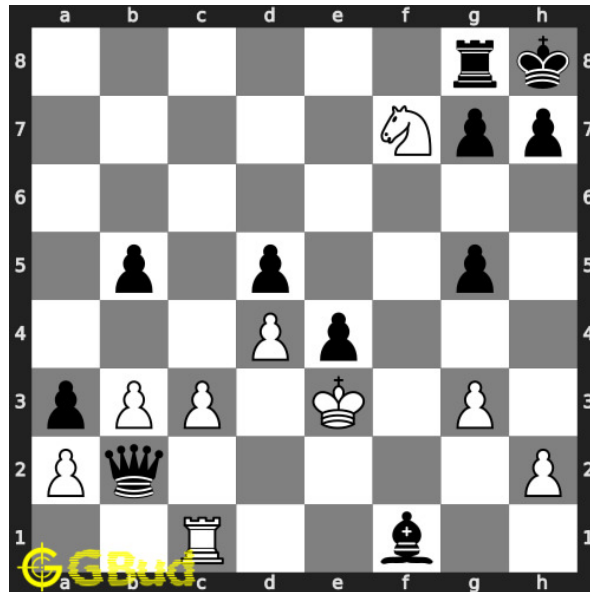


Figure 6: Nxf7# - Your next knight moves in and checkmate. There are no pieces to capture your knight and the king is blocked by friendly pieces. This is called smothered mate. This is how you can mate in 2 moves

Solution 2

Initial board position This is the initial board position of easy chess puzzle 0078.

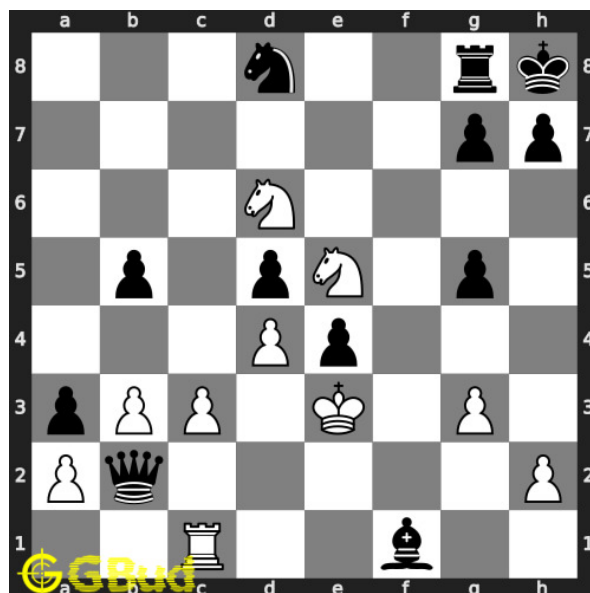


Figure 7: Initial board position of easy chess puzzle 0078

Move 1 Move by white

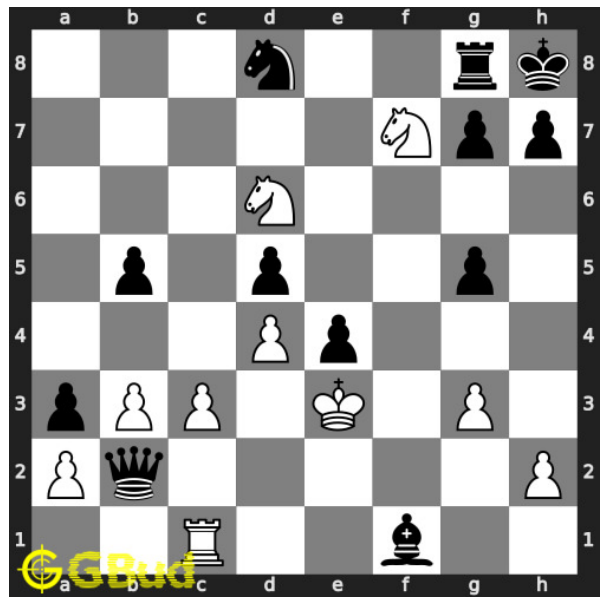


Figure 8: Nef7+ - You can have a checkmate from f7 which is guarded by the opponent's knight. One of the knights is sacrificing itself to remove the opponent's knight. This knight forks opponent's king and knight

Move 2 Move by black

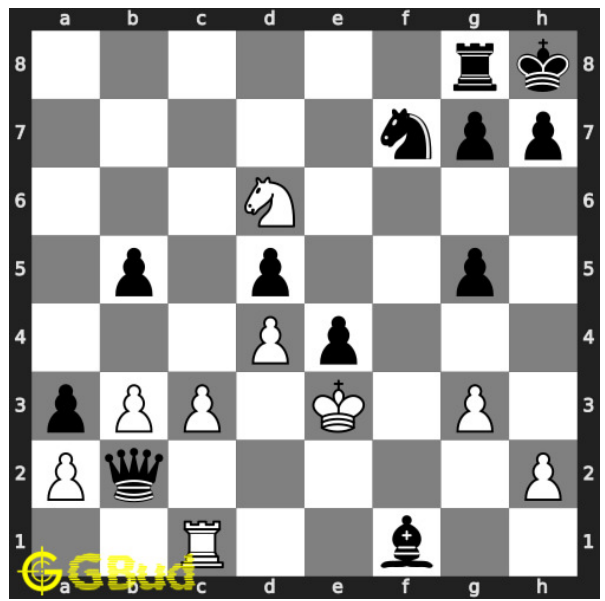


Figure 9: Nxf7 - Opponent's knight captures yours. If you give a chance, opponent will have a checkmate by moving their queen

Move 3 Move by white

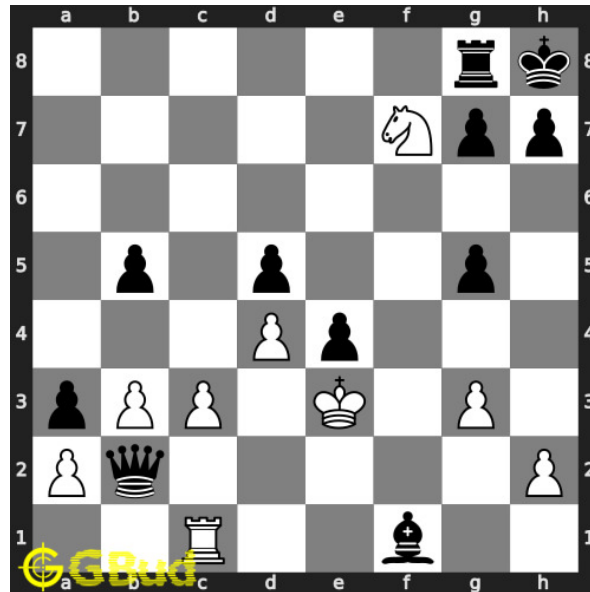


Figure 10: Nxf7# - Your next knight moves in and checkmate. There are no pieces to capture your knight and the king is blocked by friendly pieces. This is called smothered mate. This is how you can mate in 2 moves

Right moves for the solution to the easy chess puzzle 0078

Based on the objective of the puzzle, you have to make the right moves. Following are the right moves

1. Ndf7+, Nxf7#
2. Nef7+, Nxf7#

Explanation for the moves

1. Ndf7+ - You can have a checkmate from f7 which is guarded by the opponent's knight. One of the knights is sacrificing itself to remove the opponent's knight. This knight forks opponent's king and knight
2. Nef7+ - You can have a checkmate from f7 which is guarded by the opponent's knight. One of the knights is sacrificing itself to remove the opponent's knight. This knight forks opponent's king and knight
3. Nxf7# - Your next knight moves in and checkmate. There are no pieces to capture your knight and the king is blocked by friendly pieces. This is called smothered mate. This is how you can mate in 2 moves
4. Nxf7 - Opponent's knight captures yours. If you give a chance, opponent will have a checkmate by moving their queen

5. For right move - You have moved your knights effectively to have a smothered mate. Keep solving the puzzles
6. For wrong move - You could have had a smothered mate by using your knights. Try again

Categories of easy chess puzzle 0078

This easy chess puzzle falls in these categories.

1. [Easy chess puzzles](#)
2. [Sacrifice puzzles in chess](#)
3. [Mate in 2 puzzles in chess](#)
4. [Endgame puzzles in chess](#)
5. [Fork puzzles in chess](#)
6. [Strategy puzzles in chess](#)
7. [Mate pattern puzzles in chess](#)
8. [Knight puzzles in chess](#)

How to view the solution to easy chess puzzle 0078

To view the [solution to this puzzle](#), follow the steps given below

1. Go to the [puzzle page](#)
2. Click the solution button (Key as shown [below](#)) to view the solution



Figure 11: Click the solution button to view solutions @ <https://gbud.in/g639kk1>

How to get help for moves in the easy chess puzzle 0078

To get help or the possible next moves in the puzzle, , follow the steps given below

1. Go to the [puzzle page](#)
2. Click the help button (exclamation mark as shown [below](#)) to get help or suggestion on next possible [move](#)



Figure 12: Click the help button to get help on next move @ <https://gbud.in/g639kk1>



Figure 13: Solve more easy puzzles @ <https://gbud.in/chsezpz>



Figure 14: Solve other puzzles @ <https://gbud.in/chsgppz>

Play chess for free



Figure 15: Play chess online for free. Solve puzzles and play with friends

Play chess for free at <https://gbud.in/chs>

We present you a platform to play chess online with friends for free. No need to install any app. You can play chess for free without registration or login.

Simple. You can do several chess related activities.

1. [solve chess puzzles](#)
2. [learn about chess](#)
3. [play chess with computer](#)
4. [play chess with friend](#)
5. [create your own chess games](#)
6. [fen viewer](#)
7. [fen editor](#)
8. [fen generator](#)
9. [pgn viewer](#)
10. [chess board editor](#)

11. [view famous chess games.](#)



Figure 16: Solve this puzzle online by scanning this QR code or go to the link below

<https://gbud.in/g639kk1>

Read the latest article on Easy Chess puzzle # 0078 - Mate in 2 moves by scanning this QR code or click the link

Previous article : « [Easy Chess puzzle # 0077 - Get a queen in 2 moves](#)

Next article : [Easy chess puzzles](#) »

[Back to top](#)

[Contact Us](#)

© GBud Games 2021